

HDMI[®]

HIGH-DEFINITION MULTIMEDIA INTERFACE

USER MANUAL

HDMI 4x2 KVM Matrix
(4K@60Hz)

Enjoy the vivid world

Introduction :

The HDMI 4x2 KVM matrix can connect 4 HD signal sources to 2 HD display terminals with optical fiber or stereo headphone output. Two sets of mouse and keyboard can control devices on 4 PC ports at will;The matrix allows four HDMI devices to be switched or split easily to two HDMI compatible monitors or projectors. And any output ports can realize independent audio output by optical fiber or stereo headphone.

Our devices offer solutions for noise, space and security concerns, data center control, information distribution, conference room presentation, school and corporate training environments.



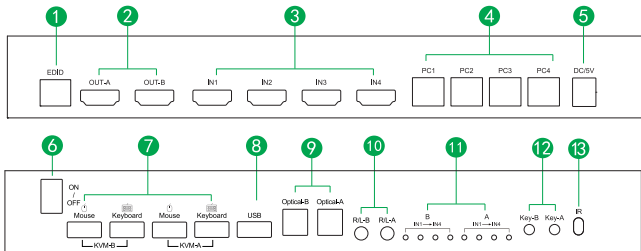
Features :

- * Support HDMI resolution up to 3840*2160/60Hz;
- * Support 3D video format;
- * Support 3 switching modes:IR remote control,button,keyboard hotkeys;
- * Support 4K (input) resolution turn to 2K (output) (Down scaler) ;
- * Support 2 HDMI audio extraction, 3.5mm earphone jack and optical fiber interface output at same time;
- * 4 HDMI inputs switch and split to 2 HDMI displays;
- * Support LPCM/Dolby/DTS 5.1 channel.
- * Support one way USB that support USB 2.0 device output (like printer,U disk etc.)

Specifications :

HDMI resolution.....	up to 3840*2160/60Hz
Support video format.....	8/10/12 bit deep color
Support audio format.....	LPCM/DTS/Dolby-AC3
Max bandwidth.....	600MHz
Max baud rate.....	3x6Gbps
Input cable distance.....	4K/30Hz ≤15M AWG26 HDMI standard cable 4K/60Hz ≤5M HDMI 2.0 standard cable
Output cable distance.....	4K/30Hz ≤15M AWG26 HDMI standard cable 4K/60Hz ≤5M HDMI 2.0 standard cable
Cable length.....	Standard USB 2.0 A male to B male cable≤ 2m
HDMI Input.....	4
HDMI Output.....	2
Max working current.....	800mA
Power adapter format.....	Input: AC (50HZ, 60HZ) 100V-240V; Output: DC5V/1.5A
Operating temperature range.....	(-15 to +45℃)
Operating humidity range.....	5 to 90%RH (No Condensation)
Dimension (L x W x H).....	256x153x33 (mm)
Weight.....	1208g

Function Interface Figure:



- | | | | | | |
|-----------|-----|------------------|---------------|-----|-------------------------------|
| 1.EDID | --- | EDID management; | 7.KVM_B-A | --- | Keyboard and mouse interface; |
| 2.OUT_A-B | --- | HDMI output; | 8.USB | --- | Printer or U disk interface |
| 3.IN1-4 | --- | HDMI input; | 9.Optical B-A | --- | Optical output; |
| 4.PC1-4 | --- | PC input; | 10.R/L_B-A | --- | Stereo output; |
| 5.DC/5V | --- | 5V power supply; | 11.B/A IN1→4 | --- | HDMI input indicator; |
| 6.ON/OFF | --- | power switch; | 12.Key_B-A | --- | HDMI output switching button; |
| | | | 13.IR | --- | IR Receive |

EDID setting:

Position 1	Position 2	Position 3	Position 4	Function
0	0	0	0	Copy the EDID of HDMI OUT 1
0	0	0	1	Copy the EDID of HDMI OUT 2
0	0	1	0	3D 1080P 2 CH LPCM
0	0	1	1	3D 1080P 5.1 CH (LPCM/Dolby/DTS)
0	1	0	0	2D 1080P 2 CH (LPCM)
0	1	0	1	2D 1080P 5.1 CH (LPCM/Dolby/DTS)
0	1	1	0	3D 4K 2 CH (LPCM)
0	1	1	1	3D 4K 5.1 CH (LPCM/Dolby/DTS)

Noted: the dial switch to dial downward is 1, dial upward is 0.

The Remote Control Instruction:



- 1) The four buttons on Output 1 is the corresponding input source IN1-IN4 which out from Output A, IN1-IN4 can be switched freely.
- 2) The four buttons on Output 2 is the corresponding input source IN1-IN4 which out from Output B, IN1-IN4 can be switched freely.

Operating instructions:

1. Two sets of mouses and keyboards insert to A、 B USB port → Use two HDMI cables connect the port 'HDMI OUT' to TV, 4 HDMI cables connect to 4 signal sources → Use USB 2.0 A male to B male cable connect the signal sources USB port to the device PC port → Connect power adapter, turn on the switch, led light indicates normal operation.

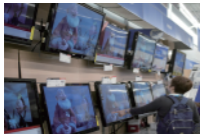
- 2.Key operation: Switch (A or B) button is use for switch the input signal sources.
- 3.Keyboard hotkeys: double click 'Ctrl' and press number 1-4 to switch the PC Port.For example,output PC3 on the HDMI B,operation as follows: keyboard and mouse insert to the B → double click Ctrl → press the number 3,then it will switch to the PC3 port.

Connection Diagram :



Notes: Only PC1 port supports USB 2.0 interface printer.

Application Scenarios:



TV Store



Teaching Room



Video Conference

Notes :

- Pls use the machine as the instruction listed to keep a long using lifetime of the device.
- 1.The device should be placed at the spot far from the Damp, High-Temperature, Dusty, Erosive, and oxidative environment.
 - 2.All parts will be kept away from the strong shake, hit, fall.
 - 3.Touching the power adaptor with the wet hands is prohibited.
 - 4.Pls hold the power adaptor head and do not pull the power cord when cut off from the socket.
 - 5.Pls turn the power off when the device is not used for long time.
 - 6.Pls do not open the cover and do not touch the inside parts.
 - 7.Pls use the original factory power adapter.

Accessories :

- | | |
|----------------------------------|-----|
| 1.HDMI Matrix 4X2 | 1PC |
| 2.IR Remote Control | 1PC |
| 3.5V Power Adapter | 1PC |
| 4.USB 2.0 A male to B male Cable | 4PC |
| 5.User Manual | 1PC |